

Christ Is Mine Forevermore

Words and Music by
Jonny Robinson and Rich Thompson

♩ = 72

INTRO / TURNAROUND

C F/C C

VERSE

G C C F/C



1. Mine are days that God has
2. Mine are tears in times of
3. Mine are days here as a

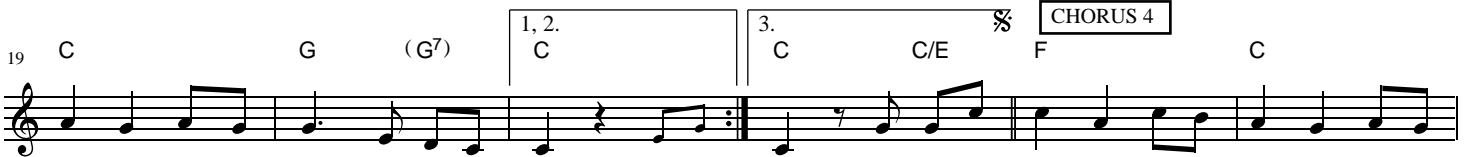


num-bered; I was made to walk with Him. Yet, I look for world-ly treas-ure and for-sake the King of
sor-row, dark-ness not yet un-der-stood. Through the val-ley I must trav-el where I see no earth-ly
stran-ger, pil-grim on a nar-row way. One with Christ I will en-coun-ter harm and ha-tred for His

CHORUS



kings. But mine is hope in my Re-deem-er; though I fall, His love is sure. For Christ has paid for ev-'ry
good. But mine is peace that flows from heav-en, and the strength in times of need. I know my pain will not be
name. But mine is ar-mour for this bat-tle, strong e-nough to last the war. And He has said He will de-



fail-ing; I am His for-ev-er more. shore. And mine are keys to Zi-on ci-tty where be-
wast-ed; Christ com-pletes His work in me.
-liv-er safe-ly to the gold-en



-side the King I walk. For there my heart has found its treas-ure; Christ is mine for-ev-er-more.

INSTRUMENTAL



Come re-joice now, O my soul, for His

Christ Is Mine Forevermore - 2

38 C G C C/E F

love is my re - ward. Fear is gone and hope is sure; Christ is

Detailed description: This block contains the first line of music, measures 38 to 41. The melody is written on a single treble clef staff. Chords are indicated above the staff: C, G, C, C/E, and F. The lyrics are: "love is my re - ward. Fear is gone and hope is sure; Christ is".

42 G

1, 2. C 2. C

mine for - ev - er - more. Come re - - more. And mine are

D.S. al Coda

Detailed description: This block contains the second line of music, measures 42 to 45. The melody continues on the treble clef staff. Chords are G, C, and C. There are first and second endings for the C chord. The lyrics are: "mine for - ev - er - more. Come re - - more. And mine are". The instruction "D.S. al Coda" is written at the end of the line.

46 Coda C

ENDING C G7

1. C 2. C

more. Christ is mine for - ev - er - more. Christ is more.

Detailed description: This block contains the third line of music, measures 46 to 50. The melody is on the treble clef staff. Chords are C, C, G7, C, and C. There are first and second endings for the C chord. The lyrics are: "more. Christ is mine for - ev - er - more. Christ is more." A Coda symbol is present at the beginning of the line.

51 OUTRO C F/C C G

1. C 2. C

Detailed description: This block contains the fourth line of music, measures 51 to 54. The melody is on the treble clef staff. Chords are C, F/C, C, and G. There are first and second endings for the C chord. The lyrics are not explicitly written for these measures.